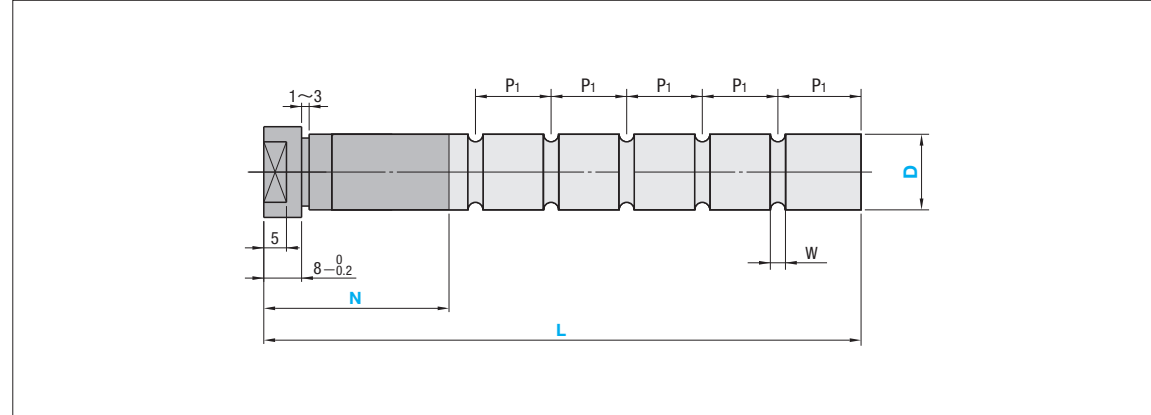


# SUPPORT PINS

— OIL GROOVE TYPE OIL GROOVE PROCESSING GUIDE — / — EXAMPLE —

## Support Pins — Oil groove type — Oil groove processing guide



### Adds an oil groove

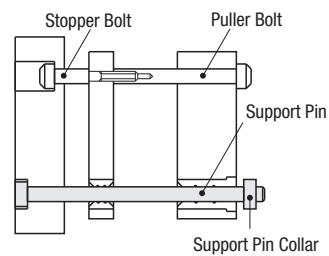
An oil groove with W width is processed at first on the position (N+10), followed by further grooves being processed at P1 intervals to E1.

Nmax.: Maximum Value of press-fit length  
 P1: Interval of oil groove  
 W: Oil groove width

D	Nmax.	P1	W
13 · 16	30	20	3
20		25	
25		40	
28 · 30	50	30	5
32 · 35 · 36	60	35	
40			



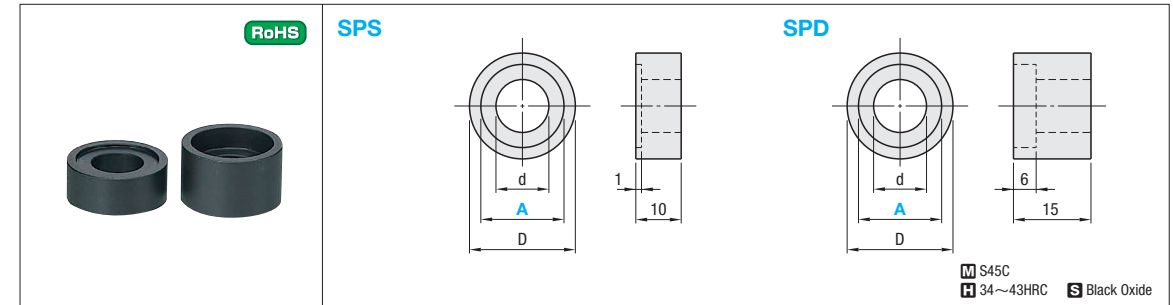
Example



Receiving the weight of a die plate on their tips, support pins may deflect due to a large amount of bending moment and eventually break due to resulting cracks. Usage of leader bushing is recommended.

# SUPPORT PIN COLLARS

ⓘ Non JIS material definition is listed on P.1351 - 1352



Applicable support pins (D)	D	d	Part Number		SPS U/Price				SPD U/Price				
			Type	A	1~9	10~29	30~99	100~200	1~9	10~29	30~99	100~200	
13	18	6.5	SPS SPD	13									
16	21	10.5		16									
20	25	12.5		20									
25	30	16.5		25									
28	33			28									
30	35			30									
32	37			32									
35	40			35									
36	41			36									
40	45			40									
				40									

ⓘ To be quoted on price & lead time above Max. Q'ty.



Order

Part Number  
SPS16

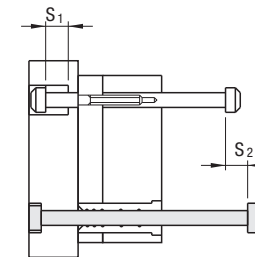


Days to Ship

Quotation



Example



Use the support pin collars to prevent from such accidents as puller bolt or stopper bolt breakage. Use a support pin in accordance with the S2 amount in left figure.

• Although a stopper bolt is sufficient to control the stroke amount (S) of a runner stripper plate (S2 > S1), we recommend that you use a support collar as a guard for the underhead of the support pin.