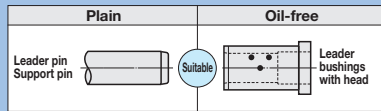


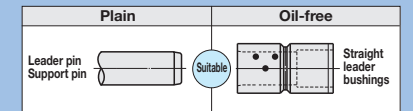
OIL-FREE LEADER BUSHINGS

—COPPER ALLOY WITH HEAD—



OIL-FREE LEADER BUSHINGS

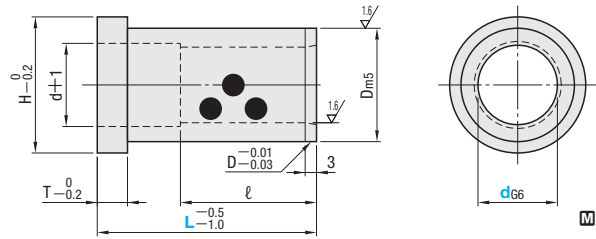
—COPPER ALLOY STRAIGHT TYPE—



Non JIS material definition is listed on P.1351 - 1352

RoHS

GBHDZ

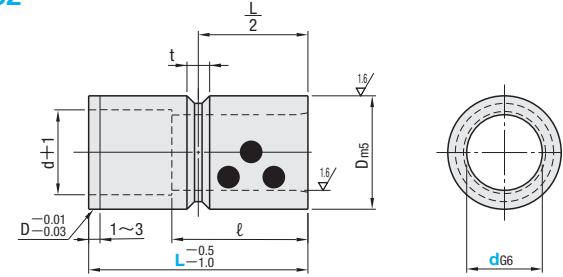


Grade-4 high strength brass (CAC304)
(Old JIS: HBsC4)
Special solid lubricant
Graphite (embedded)

Usable temperature range for the special solid lubricant: up to 150°C

RoHS

GBSDZ



Grade-4 high strength brass (CAC304)
(Old JIS: HBsC4)
Special solid lubricant
Graphite (embedded)

Usable temperature range for the special solid lubricant: up to 150°C

dG6	T	Dm5	H	ℓ																					
				L15	L20	L25	L30	L35	L40	L50	L60	L70	L80	L90	L100	L110	L120	L130	L150						
8	+0.014	5	12	14	—	15	15	—	—	—	—	—	—	—	—	—	—	—	—	—	—	—	—		
10	+0.005		14	+0.015	16	15	20	20	20	20	20	—	—	—	—	—	—	—	—	—	—	—	—	—	
12	+0.017		18	+0.007	22	15	20	25	—	—	—	—	—	—	—	—	—	—	—	—	—	—	—	—	
13	+0.017	6	20	25	15	20	25	25	25	25	25	—	—	—	—	—	—	—	—	—	—	—	—	—	
16	+0.006		25	+0.017	30	15	20	25	30	35	30	30	—	—	—	—	—	—	—	—	—	—	—	—	
20	+0.020		30	+0.008	35	—	20	25	30	35	40	40	40	40	40	40	40	40	—	—	—	—	—	—	
25	+0.007	8	35	40	—	20	25	30	35	40	50	50	50	50	50	50	50	—	—	—	—	—	—	—	
30	+0.020		42	+0.009	47	—	25	30	35	40	50	60	60	60	60	60	60	60	60	60	60	60	60	60	60
35	+0.025		48	+0.009	54	—	—	—	—	—	40	50	60	70	70	70	70	70	70	70	70	70	70	70	70
40	+0.025	10	55	60	—	—	—	—	—	40	50	60	70	80	80	80	80	80	80	80	80	80	80	80	80
50	+0.009		70	+0.024	75	—	—	—	—	—	40	50	60	70	80	—	—	—	—	—	—	—	—	—	—
60	+0.029	12	80	86	—	—	—	—	—	—	—	—	—	—	—	—	—	—	—	—	—	—	—	—	
	+0.010					—	—	—	—	—	—	—	—	—	—	—	—	—	—	—	—	—	—	—	—

Part Number	Type	d	U/Price 1~9																						
			L15	L20	L25	L30	L35	L40	L50	L60	L70	L80	L90	L100	L110	L120	L130	L150							
GBHDZ	8	—																							
	10	—																							
	12	—																							
	13	—																							
	16	—																							
	20	—																							
	25	—																							
	30	—																							
	35	—																							
	40	—																							
50	—																								
60	—																								

Order **Part Number** — **L**
GBHDZ13 — 40

Days to Ship **Quotation**

Price **Quotation**

Oil-free type.....Special solid lubricant eliminates the need for lubrication. (Applying initial running-in oil prior to use can enhance the product's durability furthermore.) Please note that oil oozes out from the solid lubricant at 80°C.

dG6	t	Dm5	ℓ																						
			L10	L15	L20	L25	L30	L35	L40	L50	L60	L70	L80	L100	L120										
8	+0.014	6	12	10	15	—	—	—	—	—	—	—	—	—	—	—	—	—	—	—	—	—	—		
10	+0.005		14	+0.015	10	15	20	—	—	—	—	—	—	—	—	—	—	—	—	—	—	—	—	—	
12	+0.017		18	+0.007	10	15	20	25	—	—	—	—	—	—	—	—	—	—	—	—	—	—	—	—	
13	+0.017	8	20	—	15	20	25	25	—	—	—	—	—	—	—	—	—	—	—	—	—	—	—	—	
16	+0.006		25	+0.017	15	20	25	30	35	—	—	—	—	—	—	—	—	—	—	—	—	—	—	—	
20	+0.020		30	+0.008	15	20	25	30	35	40	40	—	—	—	—	—	—	—	—	—	—	—	—	—	
25	+0.020	10	35	—	15	20	25	30	35	40	50	50	—	—	—	—	—	—	—	—	—	—	—	—	
30	+0.007		42	+0.020	20	25	30	35	40	50	60	60	60	60	60	60	60	60	60	60	60	60	60	60	60
35	+0.025		48	+0.009	25	30	35	40	50	60	70	70	70	70	70	70	70	70	70	70	70	70	70	70	70
40	+0.025	12	55	—	—	—	—	—	—	40	50	60	70	80	80	80	80	80	80	80	80	80	80	80	
50	+0.009		70	+0.024	—	—	—	—	—	—	40	50	60	70	80	—	—	—	—	—	—	—	—	—	
60	+0.029	12	80	—	—	—	—	—	—	—	—	—	—	—	—	—	—	—	—	—	—	—	—	—	
	+0.010				—	—	—	—	—	—	—	—	—	—	—	—	—	—	—	—	—	—	—	—	

Part Number	Type	d	U/Price 1~9																					
			L10	L15	L20	L25	L30	L35	L40	L50	L60	L70	L80	L100	L120									
GBSDZ	8	—																						
	10	—																						
	12	—																						
	13	—																						
	16	—																						
	20	—																						
	25	—																						
	30	—																						
	35	—																						
	40	—																						
50	—																							
60	—																							

Order **Part Number** — **L**
GBSDZ35 — 60

Days to Ship **Quotation**

Price **Quotation**

EX Example

Stopper for The Straight Leader Bushing

Screw plugs are commonly used as a stopper to hold straight leader bushings. The bushing is provided with a groove on its outer circumference where the screw plug is locked in. Since the screw plug does not directly hold the bushing's thin wall, deflection of its internal diameter can be minimized. When L=10 (d=8~20) or L=15 (d=25), screw plug is the value in ().

Leader bushing's internal diameter (d)	Applicable screw plugs
8~20	MSW 6 (4)
25~60	MSW 8 (6)