

NON-CLOGGING BUTTON DIES

—HEADED TYPE, STRAIGHT TYPE—



Type	RoHS	Material	D dimension	Catalog No.	Shape
—Headed—	RoHS	Equivalent to SKH51 61~64HRC	D3~5	SV—MHD	
		Equivalent to SKD11 60~63HRC	D6~10		
		Powdered high-speed steel 64~67HRC	D6~10	SV—PMHD	
—Straight—	RoHS	Equivalent to SKH51 61~64HRC	D3~5	SV—MSD	
		Equivalent to SKD11 60~63HRC	D6~10		
		Powdered high-speed steel 64~67HRC	D6~10	SV—PMSD	

D tolerance			Catalog No.		L	0.01mm increments min. P max.	V	G	d	H	T		
D	m5	n5	Type	D									
3	+0.006 +0.002	+0.008 +0.004	(Equivalent to SKH51)	3	16	0.50~1.00	0.4	0.2	2.0	4	3		
4	+0.009 +0.004	+0.013 +0.008	Headed type (Dm5) SV—MHD	Straight type (Dn5) SV—MSD								4	0.50~2.00
5			5										
6	+0.012 +0.006	+0.016 +0.010	(Equivalent to SKD11)	6								1.00~3.00	
8			8										
10	+0.009 +0.004	+0.013 +0.008	Headed type (Dm5) SV—MHD	Straight type (Dn5) SV—MSD								10	2.00~6.00
6			6										
8	+0.012 +0.006	+0.016 +0.010	(Powdered high-speed steel)	8								1.00~4.00	
10			10										

Ⓢ D3 headed types are thin under the head. Be careful not to damage the bushings when mounting them.
 Ⓢ L(22) and (25) are specifications available for D4~10 only.

Order **Catalog No.** — **L** — **P**
 SV—PMHD10 — 25 — P4.50

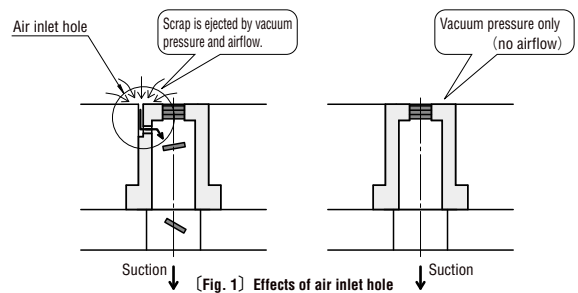
Days to Ship **Quotation**

Price **Quotation**

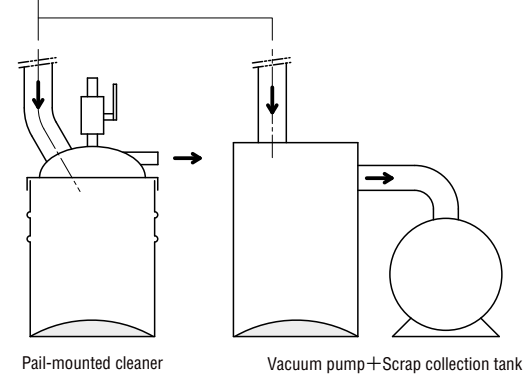
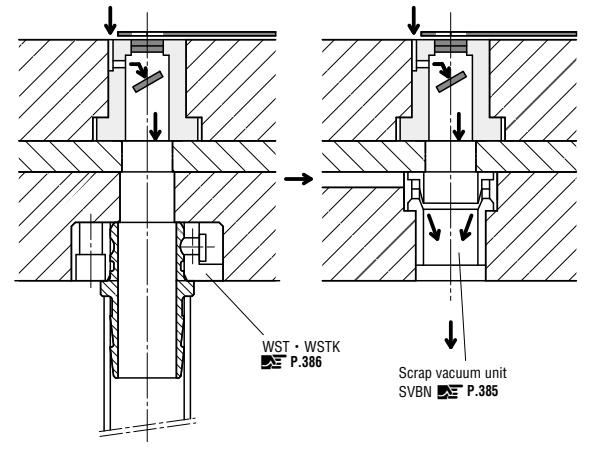
Alterations **Catalog No.** — **L (LC-SLC)** — **P (PC)** — **(HC-TC-CKC-MKC, etc.)**
 SV—MSD8 — LC18 — PC4.20 — LKC

Alteration	Code	Spec.	1Code	
Alterations to shaped hole	PC	Shaped hole diameter change min. : P > PC ≥ P _{min} /2 ≥ 0.50 0.01 mm increments		
		max. : P < PC ≤ P _{max} + 0.2 0.01 mm increments		
	PKC	Shaped hole diameter tolerance change P +0.01 → +0.005 0 → 0 Ⓢ Cannot be used for P < 100.		
Alterations to full length	LC	Full length change 10 ≤ LC < L 0.1 mm increments (if combined with LKC, 0.01 mm increments can be selected.) Ⓢ Press-in lead is shortened by (L-LC). Ⓢ Cannot be used for headed types.	Quotation	
	SLC	Changes to full length and full length tolerance are processed using a single code. The allowable range of change, increment, ordering process, and notes (Ⓢ) are the same as for LC.		
	LKC	Full length tolerance change L +0.4 → +0.05 +0.2 → 0		
	LKZ	Full length tolerance change L +0.4 → +0.01 +0.2 → 0 Ⓢ Cannot be used for L(LC) < 16.		
	CKC	Changes to head thickness tolerance and full length tolerance are processed using a single code. Machining limits are the same as for TKC and LKC. Ⓢ Cannot be used for straight types.		
		TKC + LKC Head thickness tolerance change T +0.3 → +0.02 0 → 0		Full length tolerance change L +0.4 → +0.05 +0.2 → 0
	MKC	Changes to head thickness tolerance and full length tolerance are processed using a single code. Machining limits are the same as for TKM and LKC. Ⓢ Cannot be used for straight types.		
TKM + LKC Head thickness tolerance change T +0.3 → 0 0 → -0.02	Full length tolerance change L +0.4 → +0.05 +0.2 → 0			

■ Features These non-clogging button dies are intended to be used in combination with a vacuum device such as a vacuum pump.
 • Because an air inlet hole is created near the shaped hole, when a vacuum device is used to provide suction, an air flow is produced inside the button die. This results in more effective scrap discharge compared with button dies that do not have air inlet holes. [Fig. 1]
 • It is also possible to use products such as a scrap vacuum unit (P.385) or commercially available pail-mounted cleaner as the vacuum device in place of the vacuum pump. In these cases, the drive source is compressed air from a compressor or other machine. [Fig. 2]
 • Non-clogging button dies [Products Data] P.1621



Alteration	Code	Spec.	1Code
Alterations to head	KC	Addition of single key flat to head	
		Addition of single key flat Ⓢ Cannot be used for D3~6.	
	WKC	Addition of double key flats in parallel Ⓢ Cannot be combined with KC. Ⓢ Cannot be used for straight types.	
		KFC	
	HC	Head diameter change D ≤ HC < H 0.1 mm increments	Quotation
	TC	Head thickness change 2 ≤ TC < T 0.1 mm increments (if combined with TKC-TKM-CKC-MKC, 0.01 mm increments can be selected.) Ⓢ Full length L is shortened by (T-TC). If combined with LC, full length is equal to LC.	
TKC	Head thickness tolerance change T +0.3 → +0.02 0 → 0 Ⓢ Cannot be used for L(LC) < 16.		
TKM	Head thickness tolerance change T +0.3 → 0 0 → -0.02 Ⓢ Cannot be used for L(LC) < 16.		



[Fig. 2] Examples of combinations with different vacuum devices

BUTTON DIES